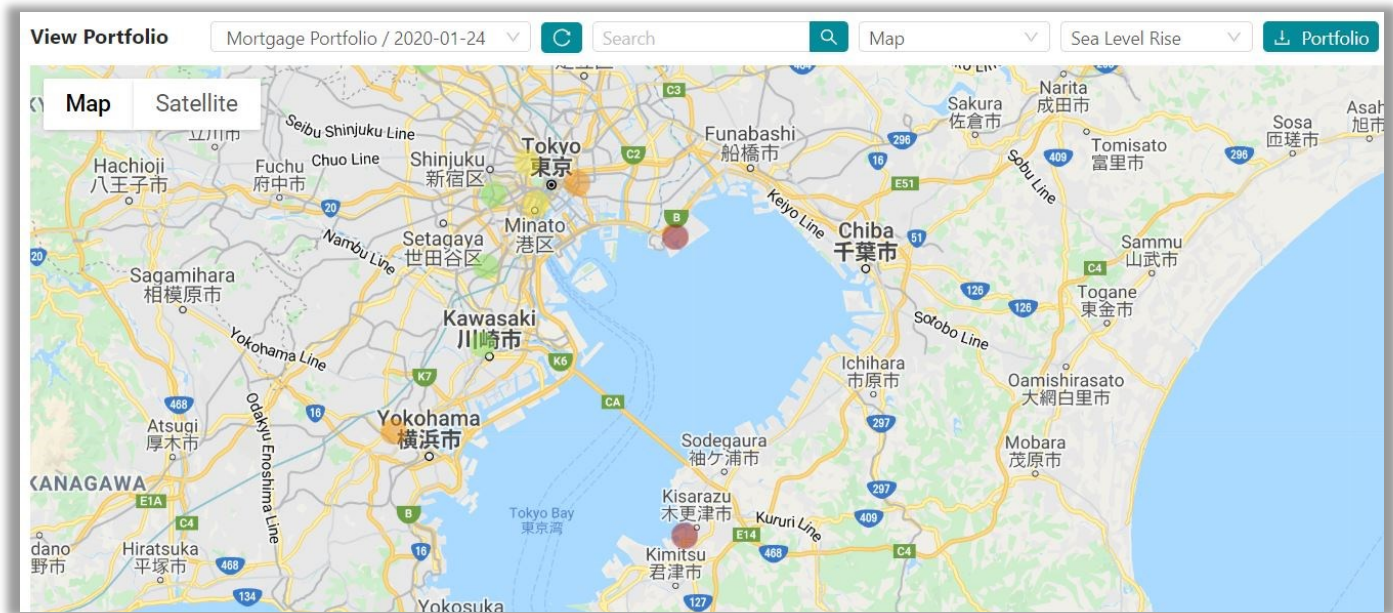


Physical Climate Risk Application 427

Four Twenty Seven's on-demand climate risk screening application provides instant insights into the forward-looking climate risk exposure of real asset portfolios via an intuitive, browser-based interface. Users can explore the climate risk drivers for a single asset or a portfolio of assets, to inform due diligence and risk management with real-time analysis.



On-demand Scoring

Real-time scoring of global locations for their exposure to relevant climate hazards, benchmarked relative to similar facilities.

Six Climate Hazards

Assess exposure to six climate hazards at the facility-level: heat stress, water stress, floods, hurricanes and typhoons, sea level rise and wildfires.

Use Cases

- **Portfolio managers** - Enhance the analysis of your portfolio and monitor risk as portfolio holdings change over time. Screen assets for their exposure to climate hazards, pre-acquisition.
- **Asset owners** - Evaluate the long-term risk exposure of your portfolio holdings and engage with asset operators to improve resilience and risk management.
- **Banks** - Identify the climate-related risks in commercial and residential mortgage portfolios. Incorporate climate risks into loan acquisition.

Features

- Score single assets or large portfolios via an interactive, browser-based application or API.
- Analyze data and underlying climate indicators via multiple visualizations.
- Score thousands of properties in minutes.

| Due Diligence 1 | | | | |
|--|------------|-------------------------|-------------------|--|
| Address: 3 chome-390 Koyasudori, Japan | | Activity: Manufacturing | | |
| Coordinates: (35.48481, 139.64967) | | | | |
| Category | Risk Level | Category Score | Country Benchmark | |
| + Earthquakes | High | 78 | 78 | |
| + Floods | Red Flag | 85 | 40 | |
| + Heat Stress | Low | 19 | 23 | |
| + Hurricanes & Typhoons | Red Flag | 100 | 91 | |
| + Sea Level Rise | Medium | 50 | 20 | |
| + Water Stress | Medium | 34 | 29 | |
| + Wildfire | Medium | 51 | 47 | |

For illustrative purposes only



Methodology

- Models assess the projected exposure to climate hazards from 2030 to 2040 for each property.
- Inland and coastal flood risk assessed at the parcel level (90m x 90m).
- Numeric scores are grouped into thresholds for straightforward communication of relative risk.

About Four Twenty Seven

Four Twenty Seven, an affiliate of Moody's, is a publisher and provider of data, market intelligence and analysis related to physical climate and environmental risks. We provide science-driven risk analytics to asset owners, asset managers, commercial banks, Fortune 100 corporations, development finance institutions and government agencies. Our products also include risk scores for equities and corporate fixed income, municipalities and sovereigns.

Contact us for a demo: sales@427mt.com • www.427mt.com

San Francisco Bay Area, CA

2000 Hearst Ave, Ste 304
Berkeley, CA 94709
Tel: +1.415.930.9090

Washington, D.C.

1875 K Street NW
Washington, D.C. 20006
Tel: +1.202.897.4020

Paris, France

2, rue du Helder
75009 Paris, France
Tel: +33. 01.53.34.11.87

Tokyo, Japan

Minamomirai 3 Chome-7-1
Nishi Ward, Yokohama, Kanagawa
220-0012, Japan
Tel: +81.80.5426.4980

FOUR TWENTY SEVEN'S RESEARCH IS NOT INTENDED FOR USE BY RETAIL INVESTORS AND IT WOULD BE RECKLESS AND INAPPROPRIATE FOR RETAIL INVESTORS TO USE FOUR TWENTY SEVEN'S RESEARCH WHEN MAKING AN INVESTMENT DECISION. IF IN DOUBT YOU SHOULD CONTACT YOUR FINANCIAL OR OTHER PROFESSIONAL ADVISER.